

Mojave Desert A.W.A.C.

Prototypical Front Yard

Native Plant and Wildlife Front Yard Landscape



Original Landscape



New Water-Efficient Landscape



**JOSHUA BASIN
WATER DISTRICT**



Alliance for Water
Awareness and Conservation
awac
Water-Conserve Today for Tomorrow

Planting Palette

Trees



Screwbean Mesquite
(Prosopis pubescens)



Blue Palo Verde
(Parkinsonia florida)



Desert Willow
(Chilopsis linearis)



Cats Claw Acacia
(Acacia greggii)

Large Shrubs



Bigberry Manzanita
(Arctostaphylos glauca)



Desert Almond
(Prunus fasciculata)



Toyon
(Heteromeles arbutifolia)



Hollyleaf Cherry
(Prunus ilicifolia)



Creosote
(Larrea tridentata)



Sugar Bush
(Rhus ovata)



Ocotillo
(Fouquieria splendens)

Medium/Small Shrubs



Deer Grass
(Muhlenbergia rigens)



White Sage
(Salvia apiana)



Desert Mallow
(Sphaeralcea ambigua)



Desert Marigold
(Baileya multiradiata)



Mojave Yucca
(Yucca schidigera)



Bladderpod
(Isomeris arborea)



Brittle Bush
(Encelia farinosa)



California Buckwheat
(Eriogonum fasciculatum)

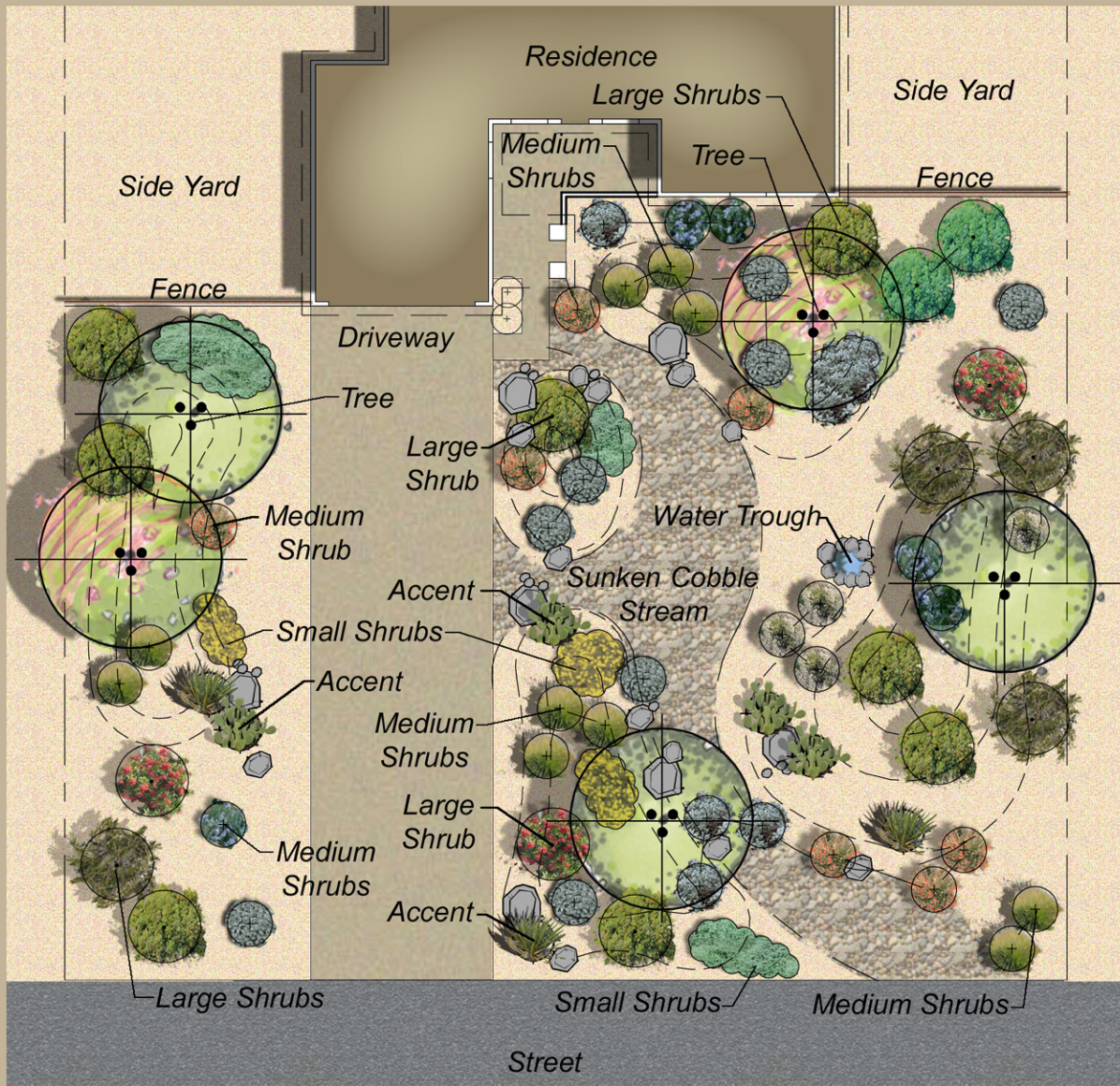


Beaver Tail
(Opuntia basilaris)

Accents



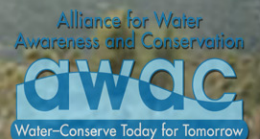
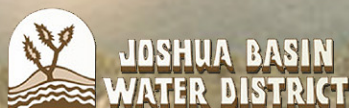
Front Yard Planting Plan



Landscape Narrative



A Garden with native plants provides habitat and food for small animals, birds, and butterflies. A water source is also important for wildlife, so place a small trough or birdbath within your garden. Provide a variety of cover for the wildlife. Bushes, trees, boulders, and logs form places that provide nesting sites, food, and hiding places for the birds and other small wildlife. Most of the small creatures do not like full cover. They need some areas of bare ground in the garden, usually with decomposed granite, sand, or other semi-loose soil. This open area can be planted with annual sun-loving wildflowers like Poppies, Chia, and Lupines, that will shrivel and disappear after flowering leaving a nice scattering of seeds in the open ground for the seed-loving wildlife.



Drip Irrigation

Drip irrigation can help you use water efficiently!



Smart Controller
Using Real Time
Weather Data



Gate Valve



Automatic Control Valve
(Use Valve, Pressure Regulator,
and Filter for Drip Zones.)



In-Line Check-Valve
(Use on all slope areas
and lowest heads)



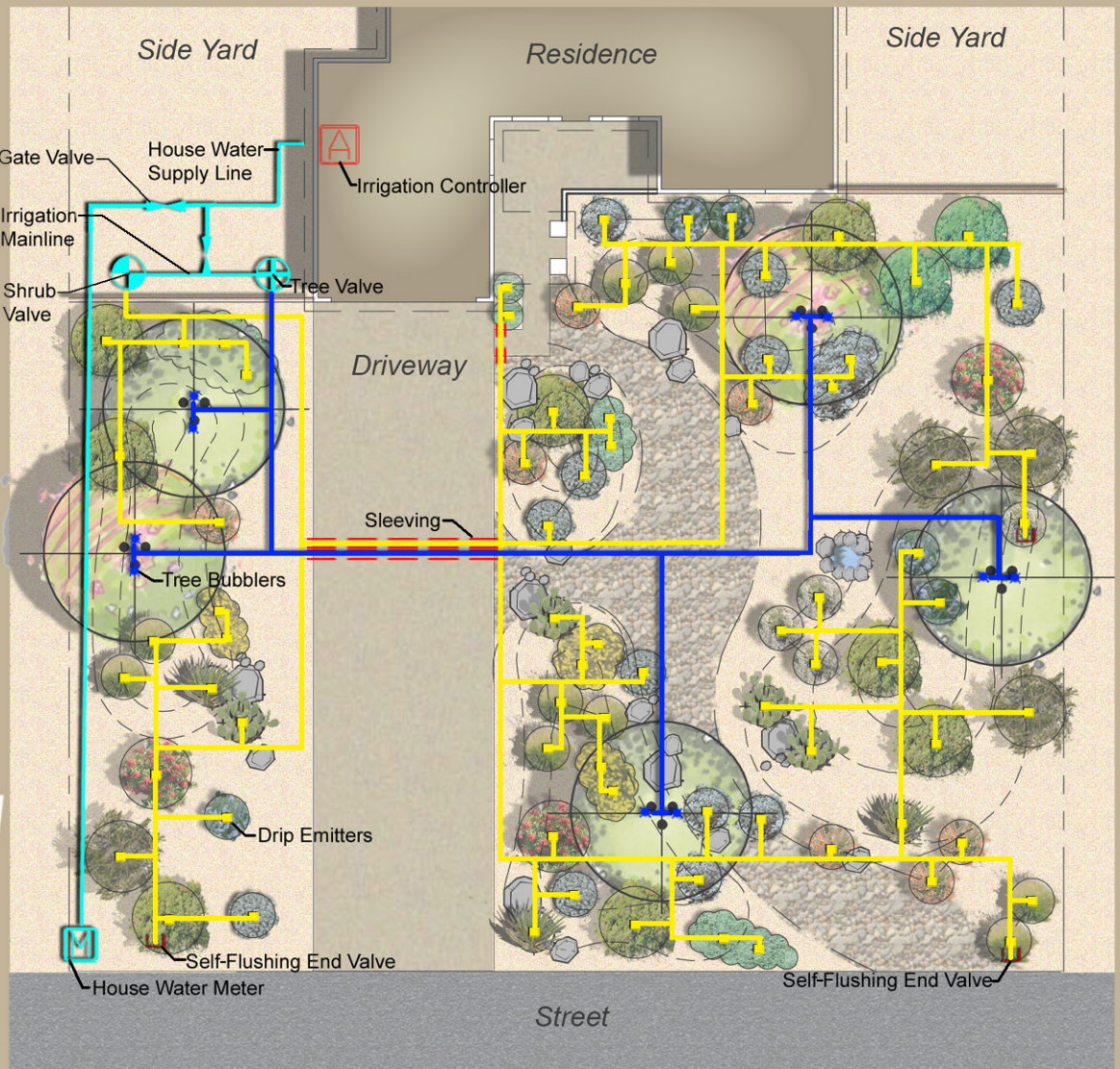
Pressure-Compensating
Emitters



Fixed-Flow
Bubbler



Self-Flushing End Valve



* Irrigation system is temporary and should be turned off after plant material is established